



CA4K RESTful API

Installation Guide

(For use with Windows 10/11 Pro or Windows Server 2019/2022)



NAPCO Security Technologies Inc.
333 Bayview Avenue, Amityville, NY 11701
Tel: 631-842-9400 Toll-Free: 800-645-9330
www.napcoaccesspro.com
techhelp@cicaccess.com

Publicly traded on NASDAQ Symbol: NSSC

DISCLAIMER

Napco Access Pro makes no representations or warranties with respect to the contents hereof and specifically disclaims any implied warranties of merchantability or fitness for any particular purpose. Further, Napco Access Pro reserves the right to revise this publication and to make changes from time to time in the content hereof without obligation of Napco Access Pro to notify any person of such revision or changes.

Copyright © 2025 Napco Access Pro. All rights reserved. No part of this publication may be reproduced, transmitted, transcribed, or stored in a retrieval system, without the prior written permission of Napco Access Pro, 355 Bayview Avenue, Amityville, NY 11701. Telephone: 631-842-9400 • FAX: 631-842-9135

This document contains proprietary information of NAPCO Security Technologies. Unauthorized reproduction of any portion of this manual without the written authorization of NAPCO Security Technologies is prohibited. The information in this manual is for informational purposes only. It is subject to change without notice. Companies, names and data used in examples herein are fictitious unless otherwise noted. NAPCO Security Technologies assumes no responsibility for incorrect information this manual may contain.

A NAPCO SECURITY TECHNOLOGIES COMPANY
Publicly traded on NASDAQ Symbol: NSSC

Visit our websites:

<https://www.napcoaccesspro.com/>

<https://www.napcosecurity.com/>

<https://www.alarmlock.com/>

Table of Contents

| | |
|---|---------------------|
| <i>Must Read Before Installation</i> | <i>4</i> |
| <i>Overview</i> | <i>5</i> |
| <i>System Requirements.....</i> | <i>5</i> |
| <i>Verify Full System Administrator Permissions.....</i> | <i>5</i> |
| <i>Related Documents</i> | <i>5</i> |
| <i>Software Version Prerequisites</i> | <i>5</i> |
| <i>Quick Start Steps</i> | <i>6</i> |
| <i>IIS Installation for Window 10/11 Pro & Windows Server 2019/2022.....</i> | <i>7-9</i> |
| <i>CA4K RESTful API Installation.....</i> | <i>10-12</i> |
| <i>RESTful API Programming Tips.....</i> | <i>13-15</i> |

Must Read before you begin installation

- To use the RESTful API, you must be an experienced Web developer.
- Before installing the RESTful API, ensure that Microsoft Internet Information Services (IIS) is installed. IIS is included with the Windows operating system and may need to be enabled through **Windows Roles and Features** if it is not already available. See pages 7-9 for detailed steps.
- These instructions apply only when Windows IIS and all required components are installed on the same machine. If the RESTful API resides on a separate web server, the necessary messaging service will be missing, preventing communication with the database. To resolve this on a standalone web server, you must install either CardAccess 4K Web or CardAccess 4K Mobile Web (to include messaging), or install CA4K as a workstation.
- The installation of IIS and the RESTful API require Full Administrator privileges without any restrictions. This includes lowering the UAC settings to “Never Notify” and verifying there are no domain restrictions.
- The RESTful API is a wrapper for the Windows .Net API.
- The Restful API is language neutral.
- By default, the RESTful API will be set up to use **port 8081**.
- The RESTful API demo code is written in C# and JavaScript. It is located on the CA4K installation media, in the same directories as the Setup.exe files, under the **API > RESTfulAPI** folder.
- You can use the Postman testing utility to test the API functions.

Overview

This document provides a step-by-step procedure for installing Microsoft Internet Information Services (IIS) for use with the CA4K™ RESTful API. Prior to starting the installation, you must verify the computer meets the recommended computer specifications and you have the CA4K™ DVD (Installation media) and the correct CA4K™ software license with the API Enabled.

System Requirements

Ensure Recommended Server Requirements are met. Verify that the computer meets the specifications that are documented in the **CA4K™ System Requirements** (Computer Specifications) document.

Verify Full Administrator Permissions

The installation of CA4K™ and IIS requires Full Administrator permissions. Failure to provide these permissions will result in installation failures.

Related Documents

CA4K™ RESTful API Functions – Help Documentation

*(Located on the CA4K installation media, under the **API > RESTfulAPI** folder)*

*See **RESTful API Programming Tips** below*

Software Version Prerequisites

- A functional CA4K™ Complete Server running V1.1.16 SP-3, V1.1.54.162 SP4, or V1.2.x or later
(If running an earlier 1.1.x version, we recommend upgrading to V1.1.54.162 SP4 at minimum to gain access to a broader range of API function calls)

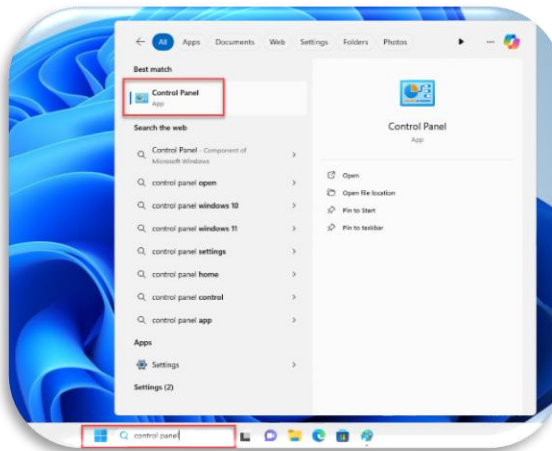
Quick Start Steps

1. Purchase a CA4K, version 1.1.x or CA4K 1.2.x Software license with the **API Enabled**.
2. Perform a CA4K Complete Server installation
3. Install Windows Microsoft Internet Information Services (IIS). After IIS is installed, verify the Default IIS Website displays.
4. Install the RESTful API from the CA4K RESTful API Installation folder, using the **Setup.exe** program.
(Located on the CA4K installation media, under the **API > RESTfulAPI** folder)
5. Verify the CA4K RESTful API folder was created in the CardAccess4K folder.
6. Verify the CA4K RESTful API Website displays in IIS and is started.
7. Refer to the RESTful API demo code if needed.
8. Use Postman test utility to do testing on the RESTful API.

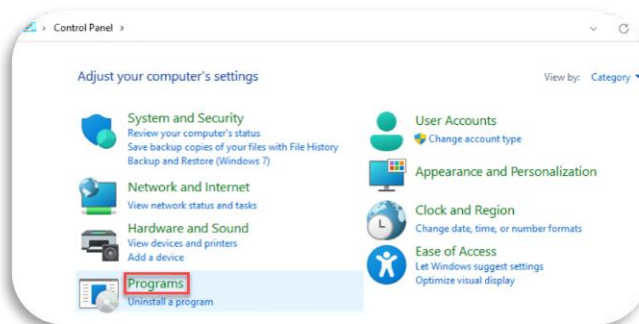
Install IIS (Internet Information Services) Installation for Windows 10/11 Pro & Windows Server 2019/2022

Note: Installing IIS must be performed prior to installing the CA4K Web Client. Below are screenshots from Windows 10/11 Pro. The following screens may vary between different operating systems. If you are using Windows Server, you must go into **Server Manager** and click on **Add Roles and Features** then proceed to step 4, to turn on the Required IIS Components.

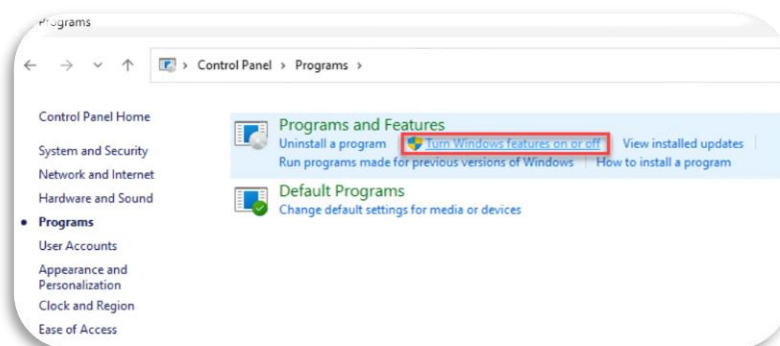
1. Click on the **Search Bar** and type in **Control Panel**. Click on **Control Panel** to open.



2. In Control Panel, Click **Programs**



3. In the Programs and Features Selection, select **Turn Windows Features on or off**



4. Turn on the Required IIS Components. Expand **Internet Information Services** (for Windows 10/11) or **Web Server** (for Windows Server) and select the required IIS components.

Note: Always Select any newer versions of .NET and ASP.NET. Turning on windows features vary between Windows OS and Windows Server environments. Below are two screenshots of the selected components, one from Windows 10/11 Pro and another from Windows Server 2019/2022

Required IIS Components

- **Internet Information Services / Web Server (IIS)**

- Common HTTP Features
 - Default Document
 - Directory Browsing
 - HTTP Errors
 - Static Content
 - HTTP Redirection
- Health and Diagnostics
 - HTTP Logging
- Performance
 - Static Content
- Security
 - Request Filtering
- Application Development
 - .NET Extensibility 3.5
 - .NET Extensibility 4.6
 - ASP.NET 3.5
 - ASP.NET 4.6
 - ISAPI Extensions
 - ISAPI Filters

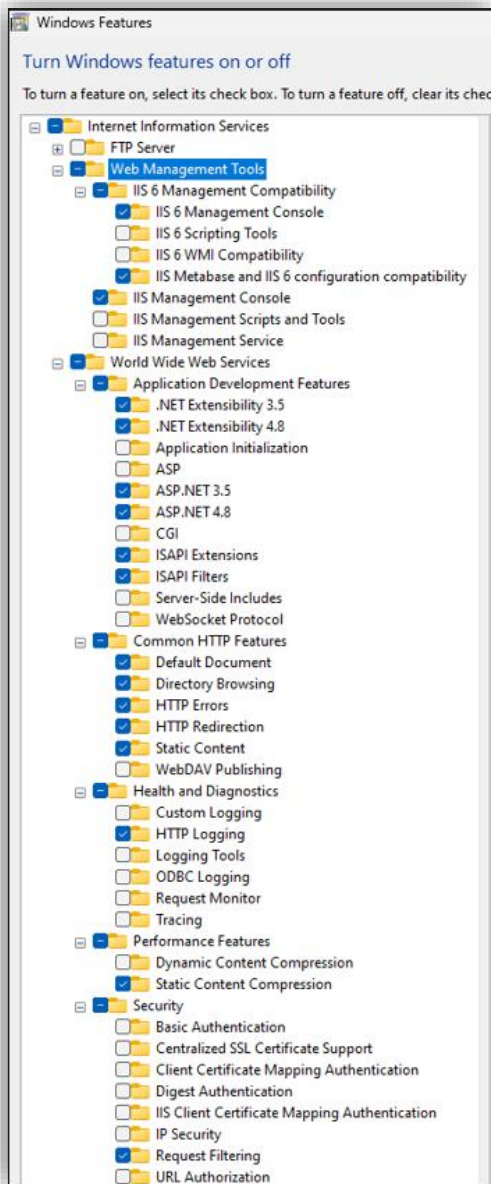
- **Management Tools**

- IIS 6 Management Console
- IIS 6 Metabase Compatibility
- IIS Management Console

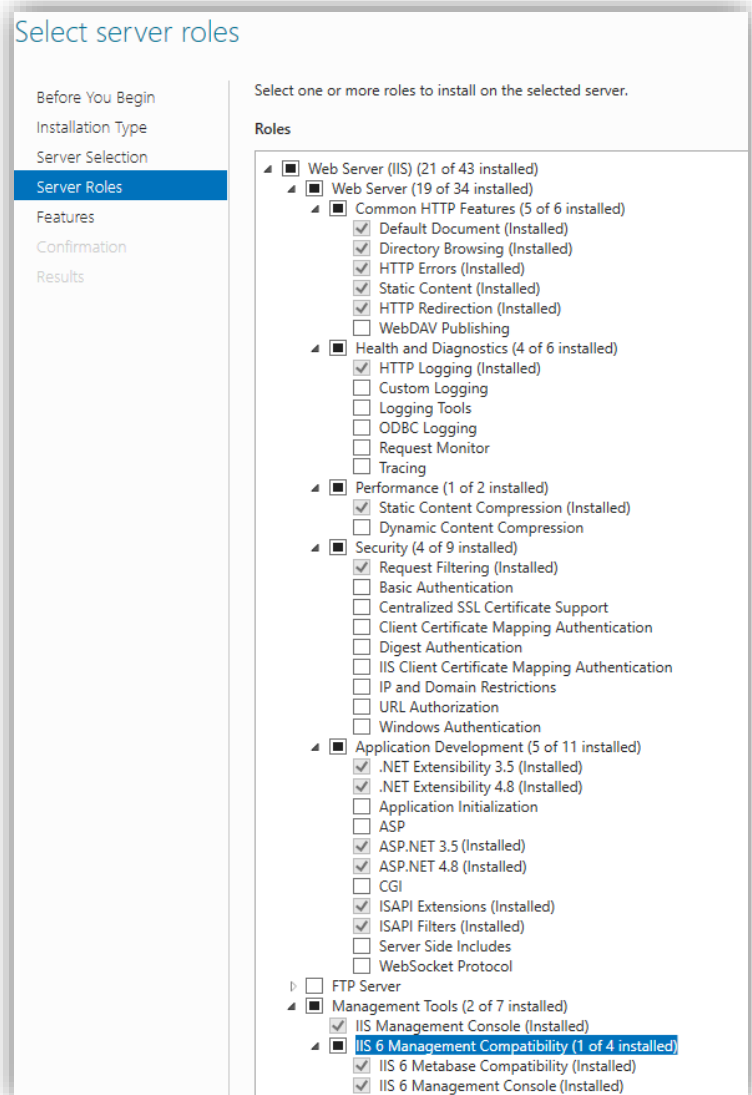
5. After selecting the required components press **OK** to finish the installation.

Note: For Windows Server, after selecting the required components, Press **Next**, until you get to the confirmation screen, then Press **Install** to finish the installation.

Windows 10/11 Pro



Windows Server 2019/ 2022



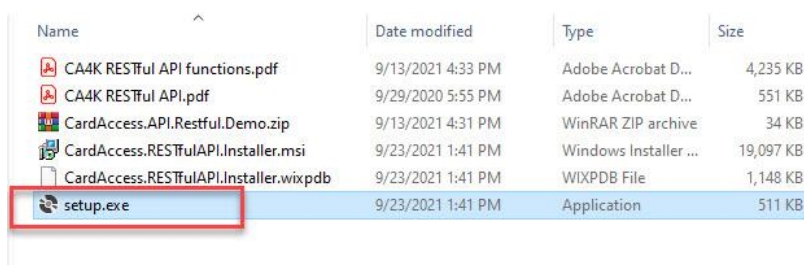
9. You can verify that IIS installed successfully, type the following into a web browser:
<http://localhost> (You will see Internet Information Services Splash Screen)

Note: After IIS is successfully installed, you must install the **RESTful API**.

CA4K RESTful API Installation

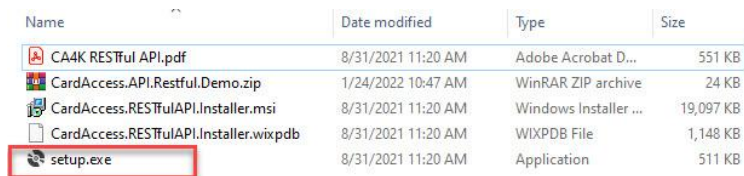
Note: The Setup files for the RESTful API are on the CA4K installation media. The setup files are in different locations in CA4K V1.1.16 SP-3 and CA4K V1.1.35 SP-1/CA4K 1.2.x or later. It is very important to also install the service packs for each version.

1. Perform one of the following steps depending on the version of CA4K you are using.
 - **V1.1.16 SP-3** Go to the **CardAccess4K>RESTfulAPI** folder in the installation folder and open it. Click on **setup.exe** as per the screenshot below.



| Name | Date modified | Type | Size |
|--|-------------------|-----------------------|-----------|
| CA4K RESTful API functions.pdf | 9/13/2021 4:33 PM | Adobe Acrobat D... | 4,235 KB |
| CA4K RESTful API.pdf | 9/29/2020 5:55 PM | Adobe Acrobat D... | 551 KB |
| CardAccess.API.Restful.Demo.zip | 9/13/2021 4:31 PM | WinRAR ZIP archive | 34 KB |
| CardAccess.RESTfulAPI.Installer.msi | 9/23/2021 1:41 PM | Windows Installer ... | 19,097 KB |
| CardAccess.RESTfulAPI.Installer.wixpdb | 9/23/2021 1:41 PM | WIXPDB File | 1,148 KB |
| setup.exe | 9/23/2021 1:41 PM | Application | 511 KB |

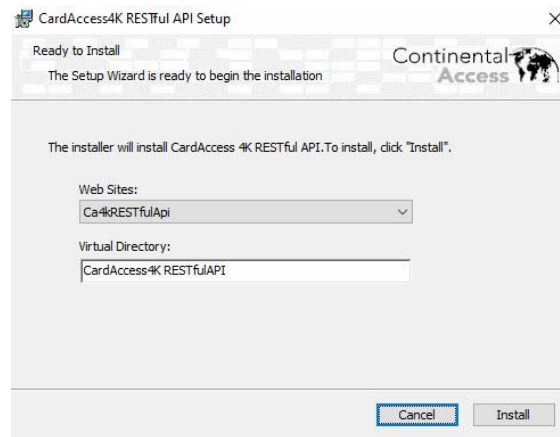
- **V1.1.35 SP-1 and later**-Go to the **CardAccess4K>API>RESTfulAPI** folder in the installation folder and open it. Click on **setup.exe** as per the screenshot below.



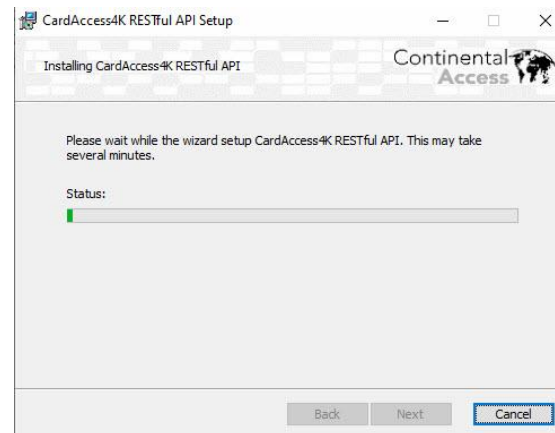
| Name | Date modified | Type | Size |
|--|--------------------|-----------------------|-----------|
| CA4K RESTful API.pdf | 8/31/2021 11:20 AM | Adobe Acrobat D... | 551 KB |
| CardAccess.API.Restful.Demo.zip | 1/24/2022 10:47 AM | WinRAR ZIP archive | 24 KB |
| CardAccess.RESTfulAPI.Installer.msi | 8/31/2021 11:20 AM | Windows Installer ... | 19,097 KB |
| CardAccess.RESTfulAPI.Installer.wixpdb | 8/31/2021 11:20 AM | WIXPDB File | 1,148 KB |
| setup.exe | 8/31/2021 11:20 AM | Application | 511 KB |

Note: The **RESTful API Demo code** can also be found in the above two locations.

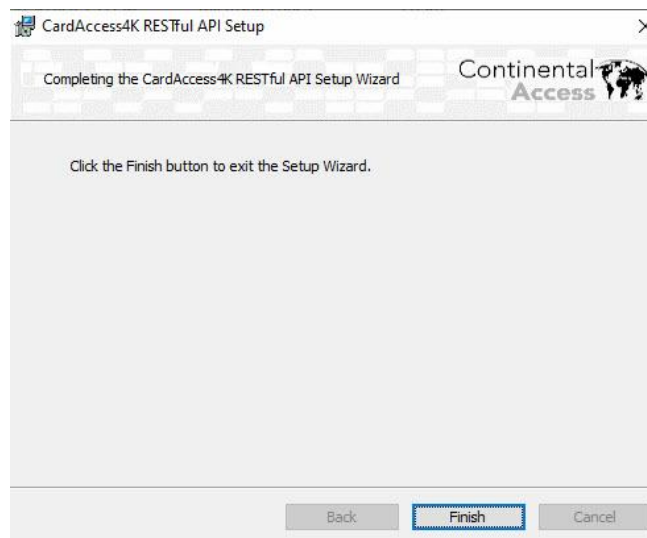
2. Upon launching the setup.exe, the **Ready to Install** screen will display. For our demonstration, leave the **Web Site name** and the **Virtual Directory** name at the defaults. Click **Install**.



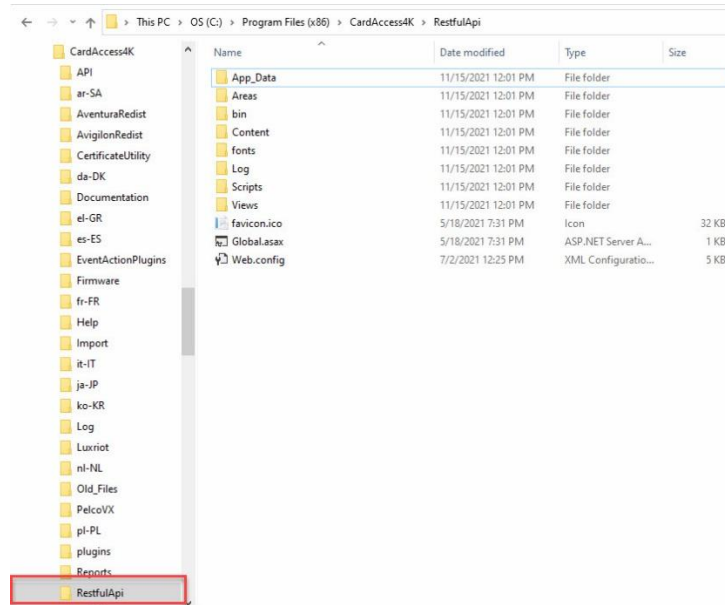
3. Upon clicking Install, a progress bar will display while setup.exe is installing files.



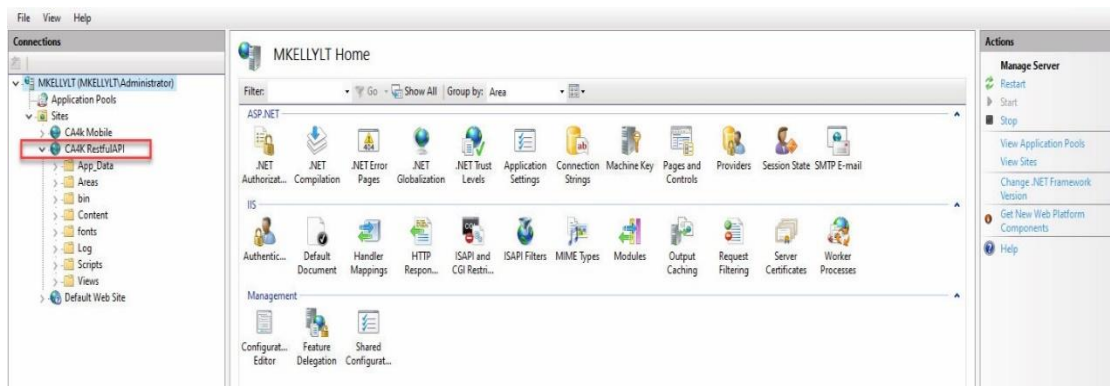
4. Upon the installation completing, click **Finish**.



5. After the RESTful API installation is complete, verify the RESTfulAPI folder was created under the CardAccess4K folder.



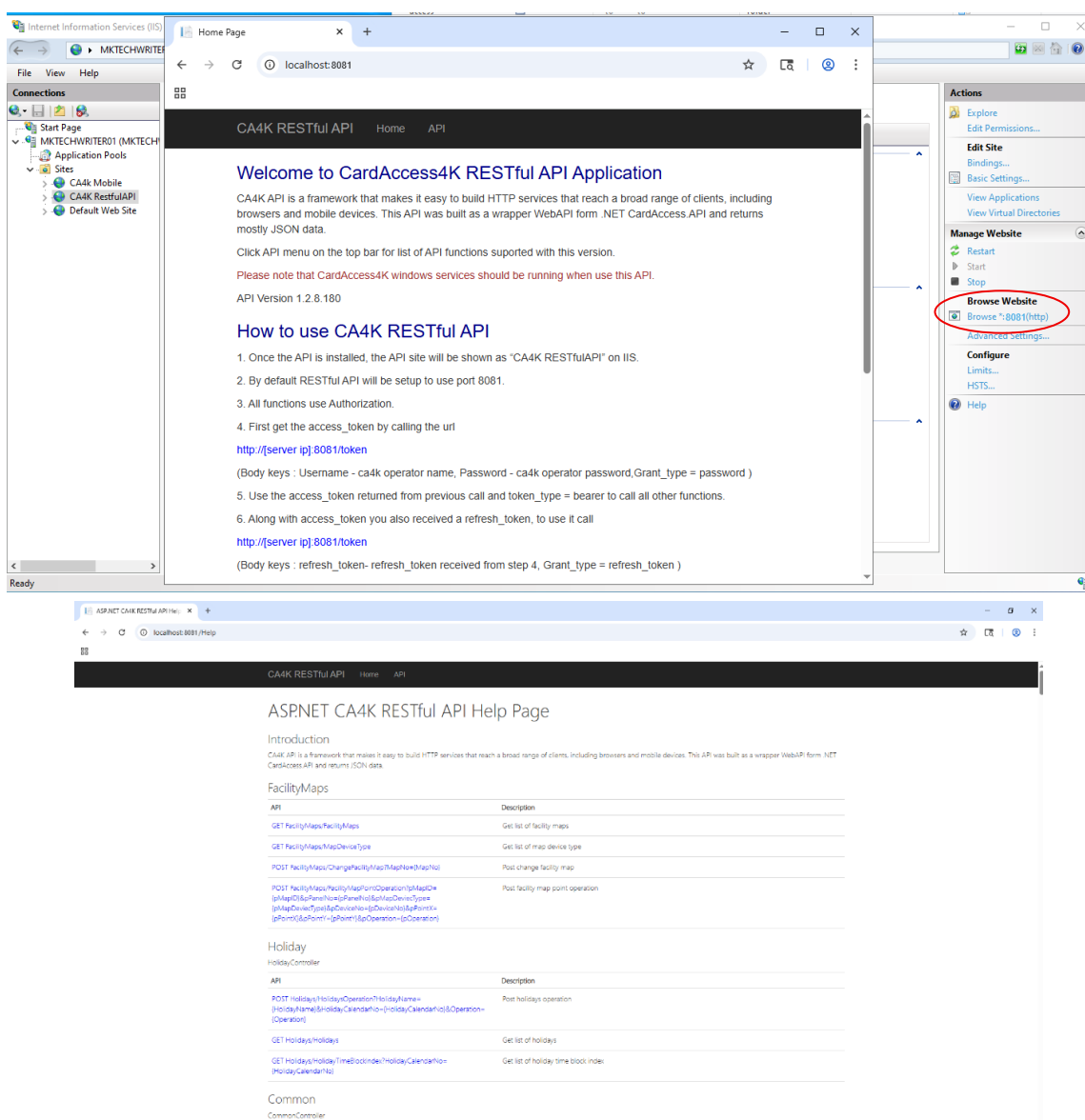
6. In addition to the RestfulApi folder being created in the CardAccess4K folder, launch IIS. In IIS, verify the **CA4K RestfulAPI site** is displaying. Right click on the **CA4K RestfulAPI site**, click **Manage Website**, and verify the site is Running.



RESTful API Programming Tips

You must be an experienced Web developer to use the RESTful API and the Demo code. The CA4K RESTful API is a framework that makes it easy to build HTTP services that reach a broad range of clients, including browsers and mobile devices. This API was built as a wrapper WebAPI from .NET CardAccess.API and returns mostly JSON data. The RESTful API demo code is written in C# and Javascript. It can be found in the same folders as the Setup.exe files. The Demo Code zip file name is **CardAccess.API.Restful.Demo.zip**.

Important: For the complete ASP.NET API help page, refer to the *CA4K™ RESTful API Functions – Help Documentation* located in the CA4K installation directory under the **RESTful API** folder. You can also access it through Microsoft IIS by selecting **“Browse Website.”** This will open the application, which provides step-by-step guidance on using the CA4K RESTful API. Selecting the **API** tab will display a full list of available API functions.



1. Once the RESTful API is installed, the IIS website name will be **CA4K RESTfulAPI**.
2. By default, the RESTful API is configured to use **port 8081**. You can change this port by selecting the CA4K RESTfulAPI site in Microsoft IIS and modifying the binding settings under "Edit Site."
3. All functions use **Authorization**.
4. First get the **access token** by calling the url `http://<server ip>:8081/token`
 - a. Body keys
 - i. Username <- ca4k operator name
 - ii. Password <- ca4k operator password
 - iii. Grant_type = password
5. Use the `access_token` returned and `token type = bearer` to call all other functions.
6. **Example 1- (To Get badgeinfo)**
 - a. <http://localhost:8081/Badges/BadgeInfo?badge=1234&facility=0>
 - b. Body keys
 - i. Authorization = bearer XXXXXXXXXXXXXXXXXXXX... , is the `access_token` return from token request call.
7. **Example 2 – (Register to receive events using signalr).**

```
@section scripts{
  @*test signalr*@
  @Scripts.Render("~/bundles/signalR")
  <script src="/signalr/hubs"></script>
  <script>
    $(function () {
      var alertHubService = $.connection.alertHubService;
      $.connection.hub.start().done(() => alertHubService.server.connect());
      alertHubService.client.alertReceived = function (sde) {
        console.log(sde);
      };
      alertHubService.client.hcsStatusReceived = function (message) {
        console.log(message);
      };
    });
  </script>
```

Example using Postman to get Token

GET Send

Params Authorization Headers (9) **Body** Pre-request Script Tests Settings

☐ none ☐ form-data ☒ x-www-form-urlencoded ☐ raw ☐ binary ☐ GraphQL

| KEY | VALUE | DESCRIPTION |
|---|----------|-------------|
| <input checked="" type="checkbox"/> username | admin | |
| <input checked="" type="checkbox"/> password | admin@4k | |
| <input checked="" type="checkbox"/> grant_type | password | |
| Key | Value | Description |

Body Cookies Headers (8) Test Results Status: 200 OK Time: 26 ms Size: 1.13 KB Save

Pretty Raw Preview Visualize JSON

```
1 {
2   "access_token":
    "IA2d16DLHED0Ze59GmG_ymmqEqV2RyGkLIXCpDqIUPy2A9zswUqttt8AVmtom9_aCXM3LjYIVba5hVcFp10v85X8f6Z05YijCxH8Pk2CaQb-Syt8P-V7N9qx84ijQQ4f9pkCk665uCuwmCckKbMP1kqOI
    74LbXMH8kweED0QhP6aXaKxp1vF8oIOz80R-XQpLFLqanLIQvLe0raRRF7ASkee8cMRUuaKObz81_EC0h-bMK8Q4svJwbFZQj9V3jIIXKkrqk9ggPig6txj8FdLUGA_H5Ae1GzVX05xdnXfdAN0AtXhVVV
    DEjo1p87mCI9jj3Fqp8xEcwIXsoTfzP3ny1qsGmKUXhyD72u_GCrTQd_8RnQytJXziydbWVCYKea_je6Ch_PnGa54Q0xgLTzqtzHdPSwvXn3zIuRkOYbKQUE4_7fr5Plv1Rfeo28N7K7Fbs6UHkWCN7HgI
    3TMLeuIDTCHmu5PYntdH4WynVDDIuofKPRLYz9Aw_EB_BrU4HsN7xhGs5d7EIGtFpug",
3   "token_type": "bearer",
4   "expires_in": 86399,
5   "badges": "null",
6   "privileges": "null",
7   "operatorId": "1eeb696c-0e28-4702-8598-c379c95b45e1",
8   "roleId": "82b19834-4ef0-405b-9ad1-23860aaf4139",
9   "operatorFirstName": "admin",
10  "operatorLastName": "admin",
11  "passwordRequiresUpdate": "False",
12  ".issued": "Tue, 29 Sep 2020 15:37:01 GMT",
13  ".expires": "Wed, 30 Sep 2020 15:37:01 GMT"
14 }
```